



BmoreArt

UNCATEGORIZED / FEBRUARY 22, 2009

Photos from Propositions at Area 4

SHARE [Facebook, Twitter, Email icons]



MOI

I will not make art. [Email a friend](#)

John Baldessari (born 1931). I Will Not Make More Boring Art. Lithograph. c. 1970. 29 9/16"...

MI

Propositions, an exhibition curated by Stephen G. Dewyer and featuring Neal Reinalda, Ding Ren, Glen Shrum, and Elena Volkova, emerged from the murky depths of Area 405, an artist run space in the Station North Arts District.



There were word pieces spread around the space, some bold and others incognito, by Ding Ren. The one below projects text into a corner of the space, with Elena Volkova's drawing on the left.

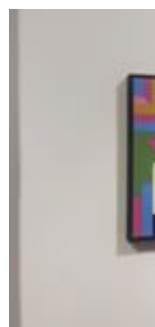
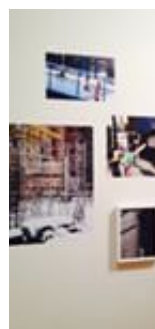


Re
 th
 co
 art

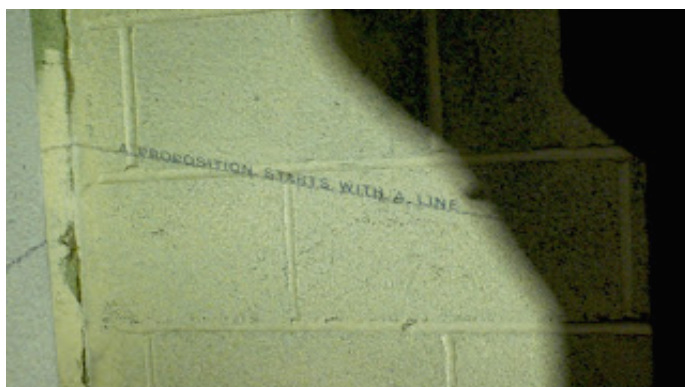
View
 mlo

MFA Ca
 Schemul

IN



Sarada Conaway makes animal heads, a collaboration with Ren's projection, which reads "A Proposition starts with a Line."

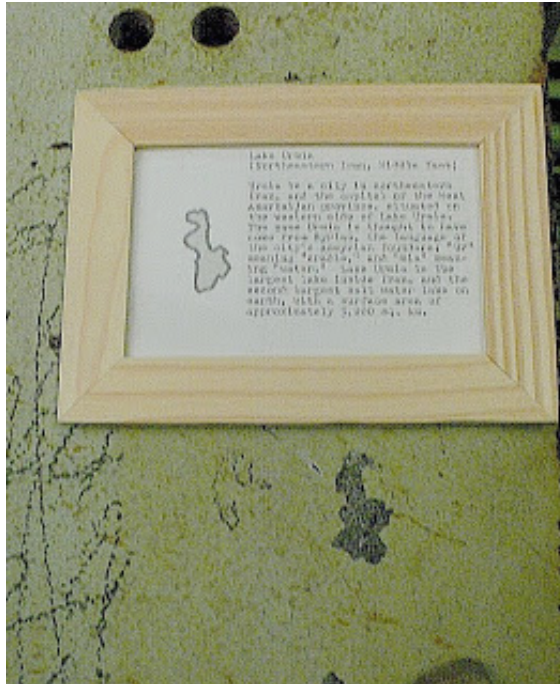


Other, scattered pieces by Ding Ren include matching specific

U

MAY
30
 Sat
 2015

islands to natural occurring paint scratches on the wall of the former factory. She includes a small plaque with each, detailing the history of each island.



Other site specific works, including Neil Reinalda’s “One Act Play,” comprised of a glass of water, plank, brick, and time. For now, it is balanced. I get it. I am also a fan of the pilsner pint glass.

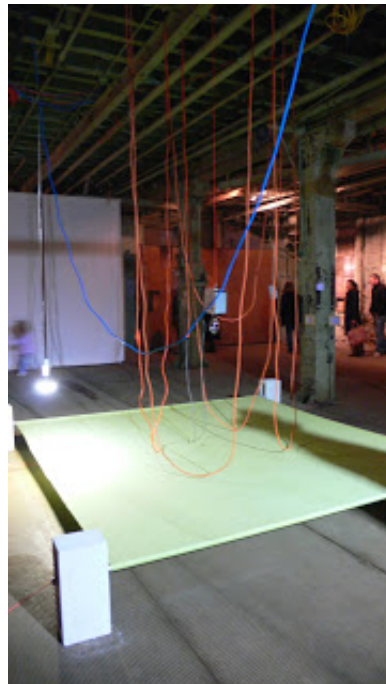
(http://bmoreart.com/baltimore-art-events/action-oneday/exact_date~30-5-2015/)

JUN
3
Wed
2015
(http://bmoreart.com/baltimore-art-events/action-oneday/exact_date~3-6-2015/)

[View Calendar](#) → (<http://bmoreart.com/>)



**BMO
CL**



Baltimore
awarded
Baltimore
August

E



Openin

MAY 26, 20



and Eve

MAY 26, 20

Glen Shrum's lighting apparatus creates an original photogram on the light sensitive canvas positioned below. Lights on timers created a sense of drama and timing in the space, as well as multiple angles for print exposure.



Lauren Schott and Zlata Baum, bathed in Glen Shrum's lighting-interval installation/print piece.



STATI



\$35 help
North p
you disc
SN busi

FIN

This is the beer line I think, above. Below, a window installation by photographer Elena Volkova confused many and subtly tickled others. Elena carefully photographed individual window panes and covered them with prints the exact size of the pane. Suspended on tiny wires, these dusky hued windows blended in perfectly.



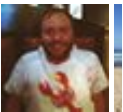
Looking at Elena Volkova's 'Window Project' installation...



Jessica at Maria Saltz.

"Women as unpr photogr someth thus av Bhabha Sarah L others f ubiquitc sculptu

2,772 people



Facebook

OT





On the other side of the room, Volkova's almost white drawings on white paper.

The Arti
 Bad Rev
 Them
 Opening
 Is an MF
 Press Et
 The Arti
 Jerry Sa
 The Big
 Artists?
 Professi
 The Var
 A Guide
 How to
 Is it Ok
 Restaur
 Making
 10 Ques
 Choosir
 Why (Sc



I'm not sure if this white screen was part of the art or some kind of divider, but Shrum's ever-changing lights did create some interesting, Kara Walker-esque shadows.



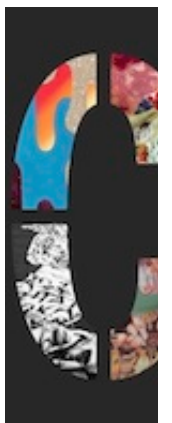
Elena Volkova and I, staying warm.

Real Est

SINO



ST



DON
WE'LI



Propositions Exhibition: 15 February – 29 March 2009
At Area 405 — For more information, visit
www.propositionsatarea405.com.



Make a
today to
fiscal sp
Send us
send yo
proudly
another

Previous Post

I will not make any more boring art.

Next Post

Interview with Hidenori Ishii

Cara Ober

Art Biz E
Art Blog
Art Fag
Artcritic

3 COMMENTS

Stephen G. Dewyer

FEB 23, 2009

REPLY

Thank you, Cara, for posting these.

Limited edition "Propositions" catalogs are available for purchase at <http://www.propositionsatarea405.com/Catalog.html> or Area 405.

Best of luck,
Stephen

B.more.Art

FEB 23, 2009

REPLY

i should have known it was yours by the clips! sorry!!!!
you have better pics on your fb page i am sure...

Anonymous

FEB 23, 2009

REPLY

Big Red
Booooo
BOPA A
Brine
Brown F
BurnAw
City Pap
Daily Se
Glasstir
Hyperal
Joanne
New An
Newsgr
Post-Of
Printere
Showsp
Strange
Tempor
The Art
Two Co
Winklen

thanks cara! great photos! it was so good to see you!(that “white screen divider” are two drawings of mine :)) -elena

Leave a Reply

Name *

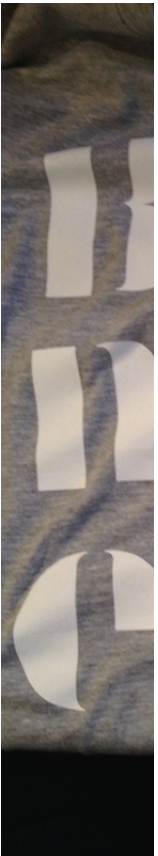
Email *

Website

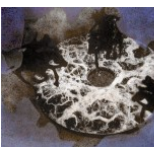
Comment

POST COMMENT

BMO



Wear yo
Click the



Resider
SOL PR

Entry

MAY 30, 2009



And Tra

MAY 30, 2009



R

Jon Bak

Choose

for a Se

Go & Se

Monday

Photos

the Reg

WE'RE M

Martora

Contem

Collabo

Long Liv

Public S

Urbanis
Allen's M

Long Liv
Projects
Urbanis
Allen's M

Bmoreart is a creative and critical daily online journal. We believe that Baltimore's creative class deserves to be discussed, critiqued, and well-informed.

[Click here](#) for Advertising Inquiries.

[Click here](#) for Bmoreart's Terms of Use Policy.

[Click here](#) to read Bmoreart's Privacy Policy.

WE SAW THIS, SO SHOULD YOU



We Saw This, So Should You: Move,

R

Jon Bak
Choose
for a Se

Go & Se
Monday
Photos
the Reg

WE'RE M
Martora
Contem
Collabo

COPYRIGHT 2014 BMOREART

Follow

Get every new post on this blog delivered to your Inbox.

Join other followers:

Enter email address

SIGN ME UP!